

# Glen Raven Inc

Hyperion &  
OBIEE



# Background

- Glen Raven has been using Oracle Financials since September of 1997.
- Implemented OFA (Oracle Financial Analyzer) to produce Financial Statements as an alternative to FSG's.
- Restructured our business units so a multiple hierarchy look was needed. OFA provided a way to have multiple hierarchies.



# Background

- Currently Glen Raven is a multi-org environment using AP, AR and GL. There are four different sets of books being used. All use the same chart of accounts but have different currencies and/or yearend. We have our plant in China running in the Oracle Financial Apps.

# Year End Change

- We changed our fiscal yearend from April to September in 2008.
- To handle the yearend change we needed to setup a new instance of OFA but realized it was to be de-supported in December of 2008.
- Decided to implement Hyperion to replace OFA.

# Acquired Business

- Glen Raven purchased two companies that already had computer systems in place.
- John Boyle business was moved to the Oracle apps.
- Astrup was being run on an AS400 distribution system.
- Glen Raven needed an easy way to consolidate for financial reporting.

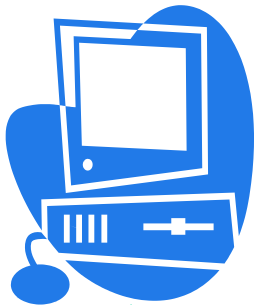


# Hardware

- 4 Dell Quad Core Dual Processors running Red Hat Linux 4.6. 1 server dedicated to development.
- 2 windows servers to handle printing. One for development and one for production.



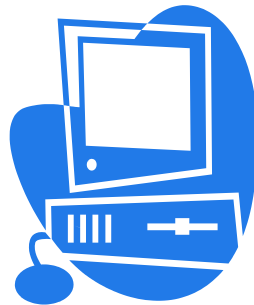
# Server Setup



Oracle RDMS  
Essbase –  
development  
production



OBIEE  
Production



Hyperion  
Production



Hyperion  
Development  
OBIEE  
Development



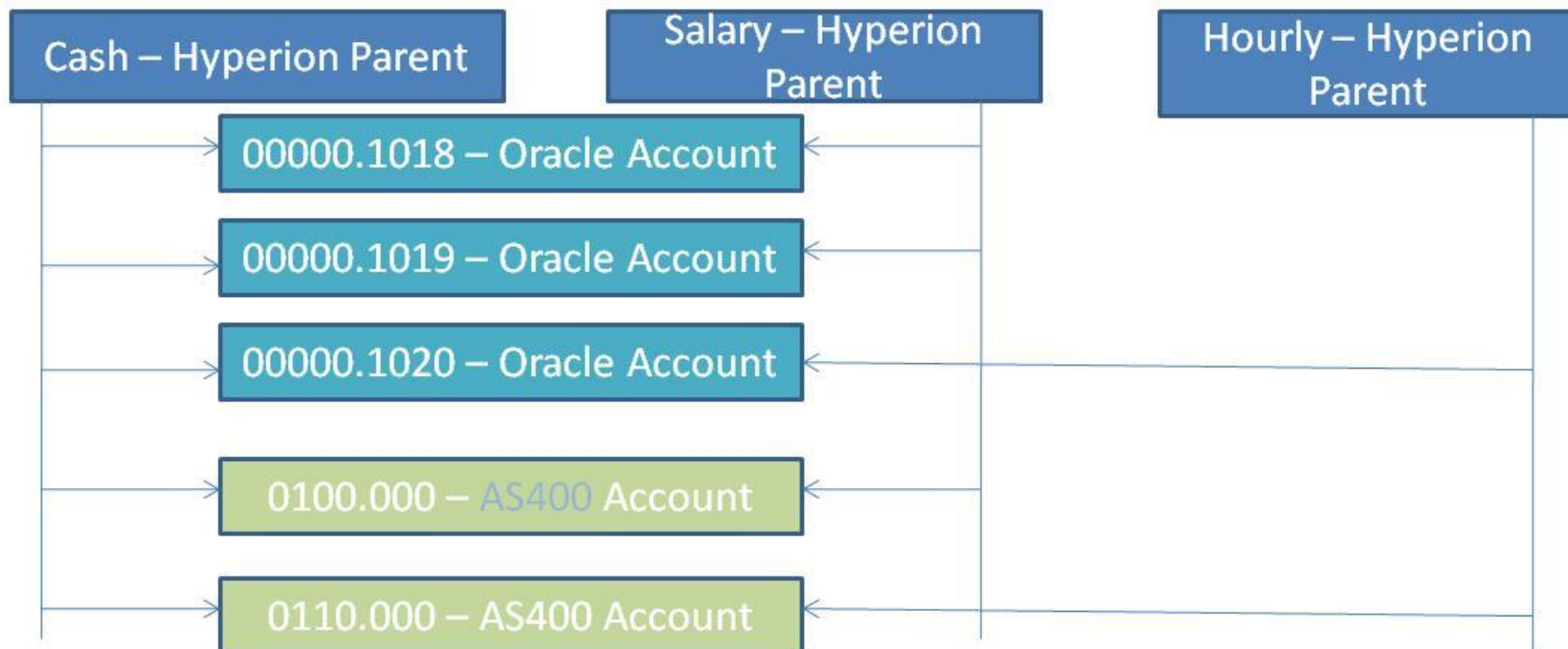
# Hyperion

- Oracle GL data pulled by custom interface into the data warehouse. Pulls 11 years of data in 25 minutes
- Trivantage GI Data pulled into data warehouse from the AS400.
- We were able to use both systems existing accounting structure.





# Sample Account Hierarchy



# Hyperion

- Multiple Hierarchies used for accounts and plants.
- Hierarchies maintained in excel for easy update.
- Combines accounts and plants from AS400 and Oracle Applications.

# Plant Hierarchies

- We use multiple hierarchies to consolidate the plants for different business purposes. For example our tax reporting structure is different than the company reporting structure. The same children are used in both hierarchies but have different rollups.



# Hierarchy layout

PlantHierarchy.xls [Compatibility Mode] - Microsoft Excel

	O	P	Q	R	S	
1	HIERS_CODE	HIERS_NAME	HIERS_CODE	HIERS_NAME	HIERS_CODE	HIERS_NAME
2	BU 110 GRM CUSTOM FABRICS	BU 110 GRM CUSTOM FABRICS	111	111 GRM CF Glen Raven		
3	BU 110 GRM CUSTOM FABRICS	BU 110 GRM CUSTOM FABRICS	112	112 GRM CF General Mill		
4	BU 110 GRM CUSTOM FABRICS	BU 110 GRM CUSTOM FABRICS	113	113 GRM CF Equinox		
5	BU 110 GRM CUSTOM FABRICS	BU 110 GRM CUSTOM FABRICS	115	115 CF Corporate		
6	BU 110 GRM CUSTOM FABRICS	BU 110 GRM CUSTOM FABRICS	119	119 GRM CF Div Elim		
7	BU 110 GRM CUSTOM FABRICS	BU 110 GRM CUSTOM FABRICS	BU 120 CF YARN	BU 120 CF YARN		
8	BU 110 GRM CUSTOM FABRICS	BU 110 GRM CUSTOM FABRICS	BU 120 CF YARN	BU 120 CF YARN	121	121
9	BU 110 GRM CUSTOM FABRICS	BU 110 GRM CUSTOM FABRICS	BU 120 CF YARN	BU 120 CF YARN	122	122
10	BU 305 GRMKT CUSTOM FABRICS	BU 305 GRMKT CUSTOM FABRICS	306	306 GRMKT CF Everywhere		
11	BU 361 GRLTD CUSTOM FABRICS	BU 361 GRLTD CUSTOM FABRICS	362	362 GRLTD CF Everywhere		
12	610	610 Dickson Elberton General Mill				
13	BU 380 DICKSON ELBERTON MARKETING	BU 380 DICKSON ELBERTON MARKETING	381	381 Dickson Elberton Marketing		
14						
15						
16	BU 130 GRM GLENSPUN	BU 130 GRM GLENSPUN	131	131 GRM GS DBU/Twisting		
17	BU 130 GRM GLENSPUN	BU 130 GRM GLENSPUN	132	132 GRM GS Kinston		
18	BU 130 GRM GLENSPUN	BU 130 GRM GLENSPUN	133	133 GRM GS Ultra spun		
19	BU 130 GRM GLENSPUN	BU 130 GRM GLENSPUN	134	134 GRM GS Norlina		
20	BU 130 GRM GLENSPUN	BU 130 GRM GLENSPUN	135	135 Yarn Group Administration		
21	BU 130 GRM GLENSPUN	BU 130 GRM GLENSPUN	136	136 GRM GS Dyehouse		
22	BU 130 GRM GLENSPUN	BU 130 GRM GLENSPUN	137	137 GRM GS Link Spinning		
23	BU 130 GRM GLENSPUN	BU 130 GRM GLENSPUN	139	139 GRM GS Div Elim		
24	BU 310 GRMKT GLENSPUN	BU 310 GRMKT GLENSPUN	311	311 GRMKT GS Glen Raven		
25	BU 310 GRMKT GLENSPUN	BU 310 GRMKT GLENSPUN	312	312 GRMKT GS New York		
26	BU 310 GRMKT GLENSPUN	BU 310 GRMKT GLENSPUN	319	319 GRMKT GS Elim		
27	BU 170 GRM GLEN TOUCH	BU 170 GRM GLEN TOUCH	171	171 GRM GT Texturing		
28	BU 320 GRMKT GLEN TOUCH	BU 320 GRMKT GLEN TOUCH	321	321 GRMKT GT Everywhere		
29	BU Park Ave w MKT	BU Park Ave w MKT		BU 150 GRM PARK AVE		
30	BU Park Ave w MKT	BU Park Ave w MKT		BU 150 GRM PARK AVE	151	151
31	BU Park Ave w MKT	BU Park Ave w MKT		BU 150 GRM PARK AVE	152	152
32	BU Park Ave w MKT	BU Park Ave w MKT		BU 150 GRM PARK AVE	153	153
33	BU Park Ave w MKT	BU Park Ave w MKT		BU 150 GRM PARK AVE	154	154
34	BU Park Ave w MKT	BU Park Ave w MKT		BU 150 GRM PARK AVE	155	155
35	BU Park Ave w MKT	BU Park Ave w MKT		BU 150 GRM PARK AVE	157	157
36	BU Park Ave w MKT	BU Park Ave w MKT		BU 150 GRM PARK AVE	158	158
37	BU Park Ave w MKT	BU Park Ave w MKT		BU 150 GRM PARK AVE	159	159
38	BU Park Ave w MKT	BU Park Ave w MKT		BU 315 GRMKT PARK AVE	316	316
39	BU 490 PARK AVE FIN CORP	BU 490 PARK AVE FIN CORP	491	491 Park Avenue Finishing Everywhere		
40	BU 470 TD SALES COMPANY	BU 470 TD SALES COMPANY	BU 471 TD SALES CO	BU 471 TD SALES CO	472	472
41	475	475 GR TO SALES				
42	488	488 GR TO Elim				
43	489	489 Knit Fabrics Elim				
44	BU 180 GRM FILAMENT FABRICS	BU 180 GRM FILAMENT FABRICS	181	181 GRM FF Weaving		
45	BU 180 GRM FILAMENT FABRICS	BU 180 GRM FILAMENT FABRICS	182	182 GRM FF Finishing		

# Year End Change

- To accommodate the year end change two cubes were created. One with a yearend of April and one with a yearend of September. We no longer load the April cube. Two years of history were loaded into the September yearend cube for comparison purposes.

# Year End Change

- In the Oracle apps we had to run a short year for the 5 months of May-08 to Sep-08. This is fiscal year 2009 in the Oracle Applications but Hyperion allowed us to have the current time period be fiscal year 2009 to better align the actual time with the fiscal time. By using the two different cubes it allowed us to report data on prior years in the original format but also restate it in the new yearend format.



# Security

- Hyperion security is based on groups setup in the active directory. We assign plants to certain groups so they will only be able to see their group. The users are assigned to a group. We do have single sign on so the users id is their network user name and password.

# Reporting

- Able to produce consolidated Income Statement, Balance Sheet, Cash Flow and various expense analysis reports.
- Have the ability to see the month, QTD, YTD and Trailing 12 months.



# OBIEE

- GR purchased the Financial Analytics to be used in OBIEE. This gave us basic dashboard information for AP, AR, and GL. Provided a pretty good jumping off point for the dashboard development.
- Be prepared to do a fair amount of customization even with the Financial Analytics.



# OBIEE

- GR is able to use the AP and AR standard Financial analytics for reporting.
- Due to our Accounting Flexfield structure we are not able to use the GL dashboards without customizations.
- The analytics are based on using the natural account only to drive reports.

# Accounting Flexfield

- Glen Raven's flexfield structure
- 201.0100.1018.0.00000000.000000



- Natural Account is made up of two segments
- 00000.1018 the Class appended to the natural account. The OBIEE GL analytics do not allow for this.

# AP OBIEE

- Since we are multi-org we are unable to see what we owe a vendor across all orgs.
- The Dashboard allows us to see AP Trial Balance information across all orgs.
- Allows quick access to see who our top vendors are across the Business Units that are in Oracle
- Provides standard reports to track invoices paid early or late.



# AR OBIEE

- Allows us to easily see our top customers across all business areas.
- Easy view of average days until a customer pays.
- Aging across all business areas.
- Can view top customers with overdue balances and top customers by payment.
- Count of adjustments made to invoices.



## Future OBIEE Plans

- Take the existing essbase cubes and push them back to the OBIEE dashboard. The dashboards allow easy end user development of reports.
- Move some Discoverer Business Areas to OBIEE.



# Future Hyperion Plans

- Implement Hyperion Planning
- Pull data from our companies in France into the essbase cube. This would give us the ability to look at data in different currencies.